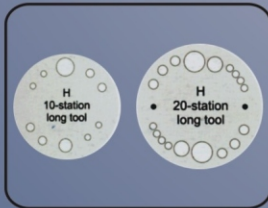


Godson Ultimate Bending Solutions

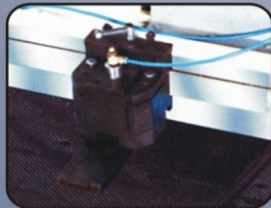
An ISO 9001 : 2008 Certified Company [®]



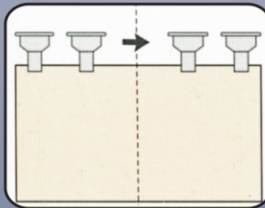
CNC - HYDRAULIC / MECHANICAL TURRET PUNCH PRESS



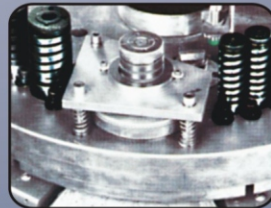
SINGAL TRACK THICK TURRET



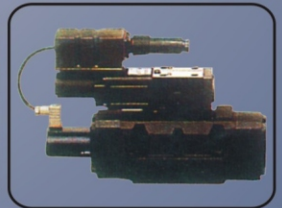
FLOATING SHEET CLAMPS



AUTO REPOSITIONING



2-AUTO INDEX MECHANISM



HYDRAULIC PUNCHING



Godson bending systems pvt. ltd.

ATIKA IND. AREA, MARG NO. 1, DHEBAR ROAD (SOUTH), RAJKOT-360 002 (INDIA)

Ph.: +91 - 281 - 2361467, 2361449 * Fax: +91-281-2361873

Website: www.godson-india.com | E-mail: godsonindia@hotmail.com



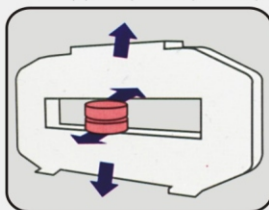
CNC HYDRAULIC / MECHANICAL TURRET PUNCH PRESS



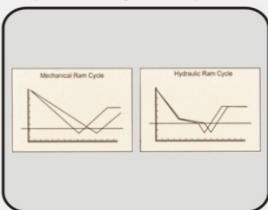
MODEL	-	SMART 1250	SMART 1500	SMART 2500
Punch Capacity	Tons	30	30	30
Traverse Length X x Y	mm	1250 x 1250	1525 x 1525	2490 x 1525
Max. Sheet Size	mm	1250 x 2500	1525 x 3050	1525 x 4980
Max Sheet Thickness	mm	6.35	6.35	6.35
Max Sheet Weight	kg.	110	110	110
Traverse Axis Speed				
X x Y	m/min.	55 x 50	80 x 70	80 x 70
Tooling Type		Thick turret	Thick turret	Thick turret
25 mm between Holes	m/min.	280	280	280
Nibbling Speed	m/min.	600	600	500
Max. Punch Diameter	mm	88.9	114.3	114.3
Number of station		36	40	40
Number of Auto Stations		2 x B type	2 x D type	2 x D type
Turret Rotation	rpm	40	40	40
Auto Index Rotation	rpm		50	-
Ram Stroke Length	mm	0.31	0-31	0-31
Number of Sheet Clamps		2	2	3
Power Requirement	kva	30	35	35
Air Consumption	L/min	250	250	250
Required Air Pressure	bar	5	5	5
Oil Tank Volume	L	250	250	250
Machine Size				
L X W X H	mm	4395 x 23635 x 2630	5050 x 3200 x 2680	5050 x 5100 x 2680
Controller Cabinet				
W X D X H	mm	1200 x 600 x 1900	1200 x 600 x 1900	1200 x 600 x 1900
CNC Controller		SMART 0i-PC	SMART 0i-PC	SMART 0i-PC
Memory	kb	256	256	256
Number of Controllable Axes		4	4	4

(1) The speed of X and Y axes depend upon the weight of the work sheet.

(2) The punch speed depends upon the length and speed of ram stroke and the speed of X and Y axes.



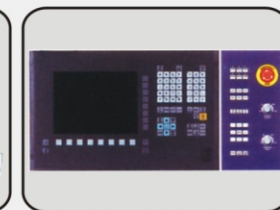
BRIDGE FRAME CONSTRUCTION



LOW NOISE OPERATION



TOOLS (PUNCH & DIE) -Optional



CNC CONTROLLER



SOFTWARE -Optional

SINGLE TRACK THICK TURRET : In this turret H type long tools are fixed with four different size.

FLOATING SHEET CLAMPS : Floating Sheet Clamps are pneumatically operated, which is designed to minimize the material distortion. when punching near the clamp.

AUTO REPOSITIONING : Precise repositions can be achieved by NC Controlled works clamp repositions. The sheet holder holds the sheet while the clamps ensure processing accuracy.

2-AUTO INDEX MECHANISM : The Machine is having 2 Auto Index (B) Station as standard equipment. The Auto Index Mechanism can set tool automatically with 360. These tools minimize the inventory for tools.

HYDRAULIC PUNCHING : High speed punching with a hydraulic system that dramatically increases ram speed and eliminates unnecessary ram motion. Valve coupled with 2-pressure 2-flow control, the use of the valve has made a fast high-low pressure change possible within one stroke, lengthening oil life and greatly saving power consumption as a result.

BRIDGE FRAME CONSTRUCTION : The Machine is consist of bridge fame construction. This design eliminates side thrust when punching with an off center load. Its also minimize frame deflection & eliminates tooling misalignment hence increase tool and machine life.

LOW NOISE OPERATION : Machine is able to control the position and speed of the ram throughout the punching stroke. Ram approaches the material slowly & hence the impact noise & part distortion is reduced. Hydraulic ram is reduces punching noise than mechanical punch presses. All approach, break-through and retract moves are made at top speed while slowing down only a part of the cycle.

TOOLS (PUNCH & DIE)-Optional : Machine's toolings are H-Type (Long tool) and it comes in four category A, B, C, D and size 1/2", 1.1/4", 2", 3.1/2". it is made out of tool steel materials, proper hardened and ground. it can be supplied as per customer's need and standard.

CNC CONTROLLER : Sutable CNC Controlar are fitted in the Machine.

SOFTWARE -Optional : Machine is offer with the latest software.

Note : Specifications / Design are subject to change without prior notice